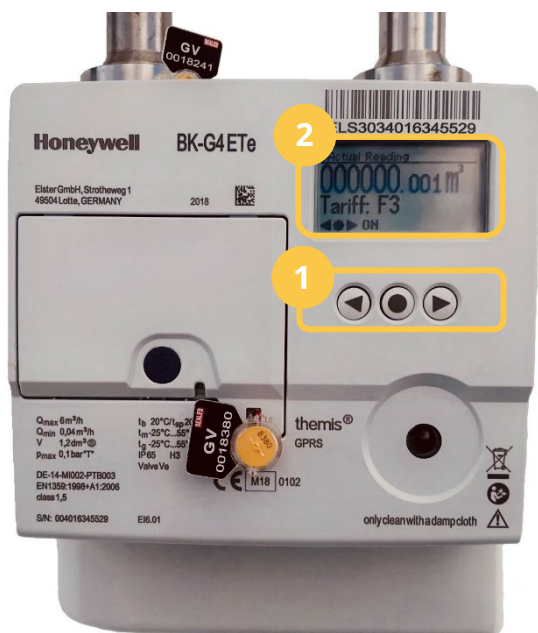


User manual for Themis Uno gas meter



1. Buttons of the gas meter 2. Screen of the gas meter

In order to turn on the screen of the gas meter, push the middle button with the circle on it (figure 1) and wait for 3 seconds, after which the digits will appear on the screen.

Big sized numbers that are depicted on the screen are used for the payments, the small sized number on the right are not.

Tariff: F3 means that tariff-based calculation is not active.

Important:

It is **STRICTLY PROHIBITED** to paint the gas meter!

It is strictly prohibited to remove or damage the security elements on the gas meter. If the security elements are damaged, then you as a client are obliged to inform AS Gaasivõrgud.